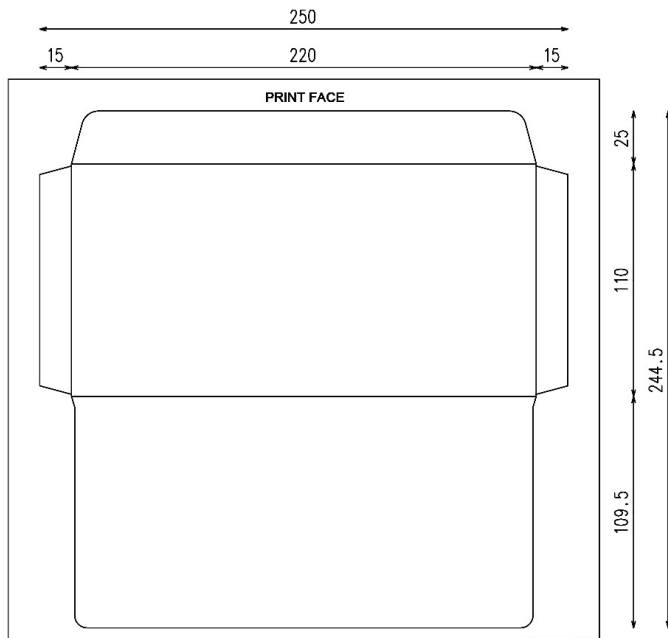


DL WALLET

Minimum Sheet Size: 280 x 274.50mm

Dimensions: 110 x 220mm

Suits: A5 Folded Once, A4 Folded into Thirds

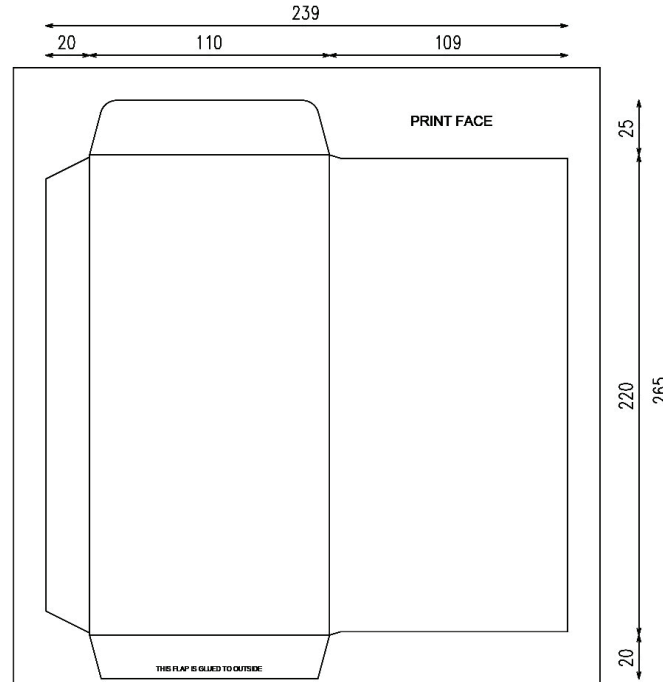


DL POCKET

Minimum Sheet Size: 269 x 295mm

Dimensions: 110 x 220mm

Suits: A5 Folded Once, A4 Folded into Thirds

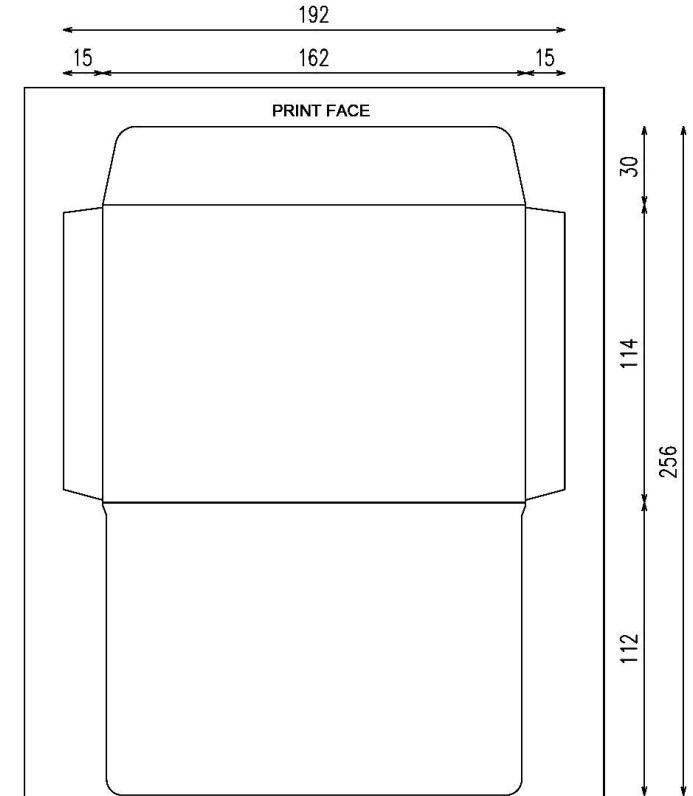


C6 WALLET

Minimum Sheet Size: 222 x 286mm

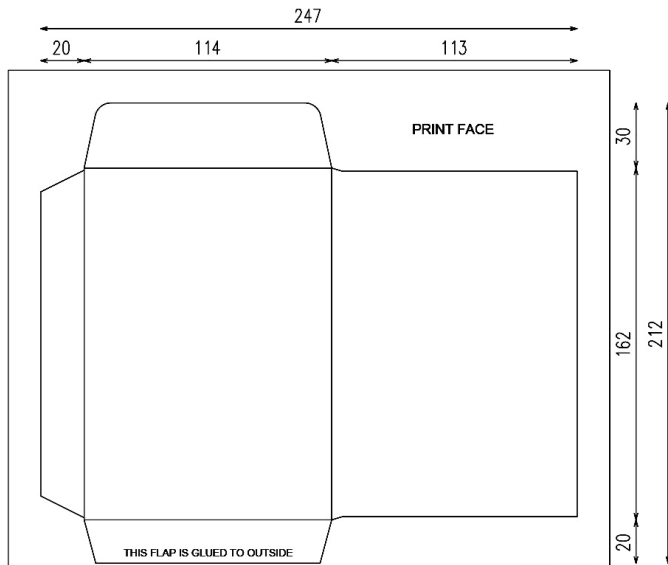
Dimensions: 114 x 162mm

Suits: A6, A5 Folded Once, A4 Folded in Half Twice



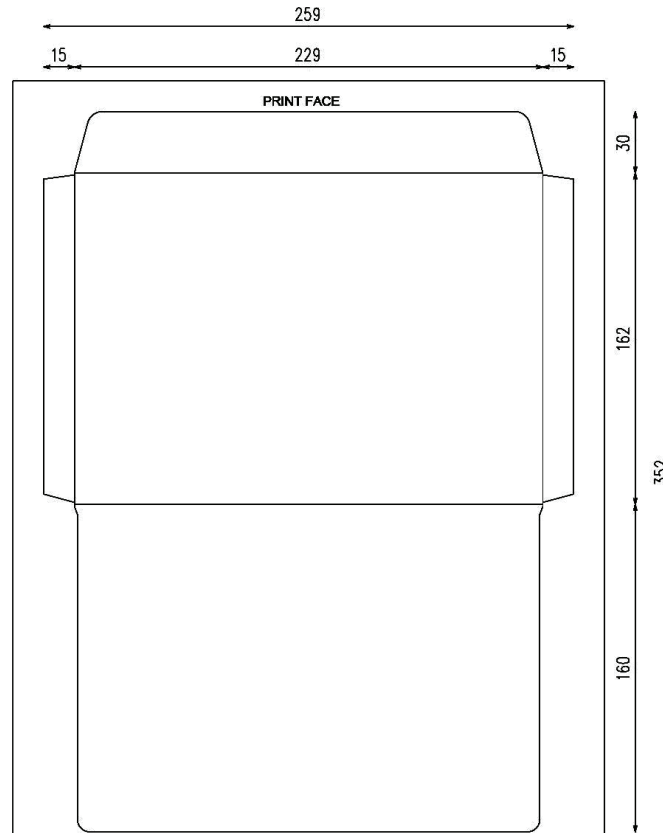
C6 POCKET

Minimum Sheet Size: 277 x 242mm
Dimensions: 114 x 162mm
Suits: A6, A5 Folded Once,
A4 Folded in Half Twice



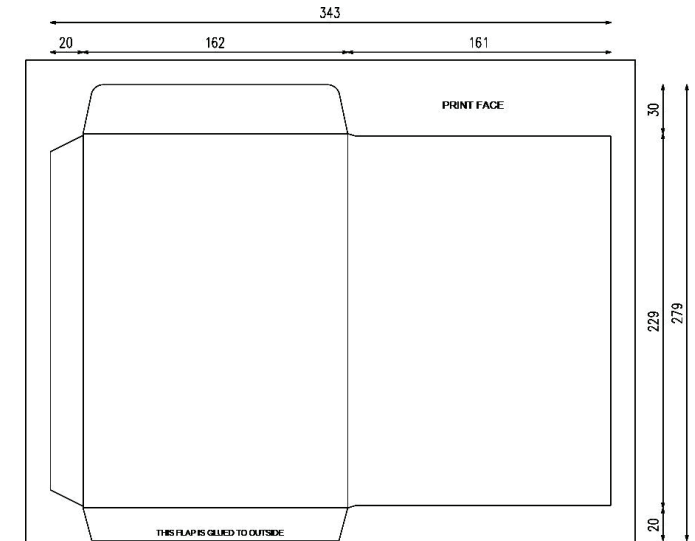
C5 WALLET

Minimum Sheet Size: 289 x 382mm
Dimensions: 162 x 229mm
Suits: A5 Unfolded, A4 Folded Once



C5 POCKET

Minimum Sheet Size: 373 x 309mm
Dimensions: 162 x 229mm
Suits: A5 Unfolded, A4 Folded Once

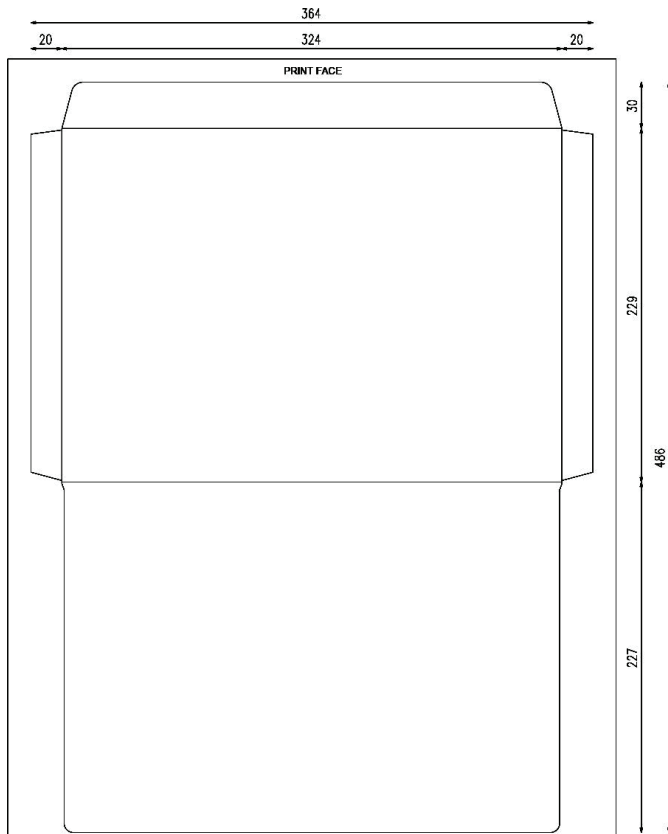


C4 WALLET

Minimum Sheet Size: 394 x 516mm

Dimensions: 229 x 324mm

Suits: A4 Unfolded, A3 Folded Once

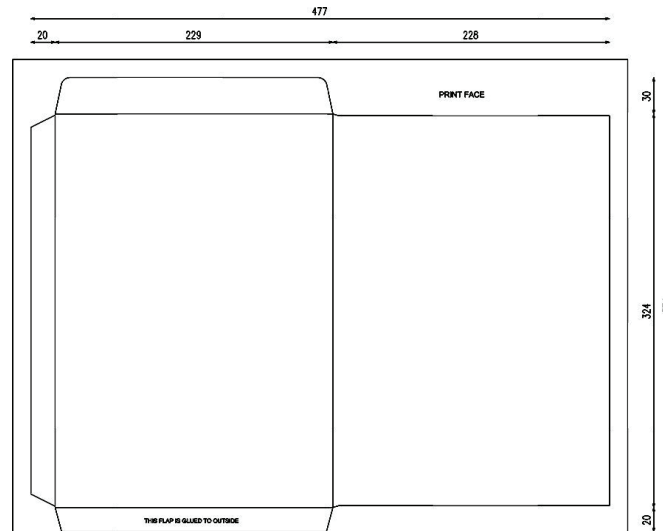


C4 POCKET

Minimum Sheet Size: 507 x 404mm

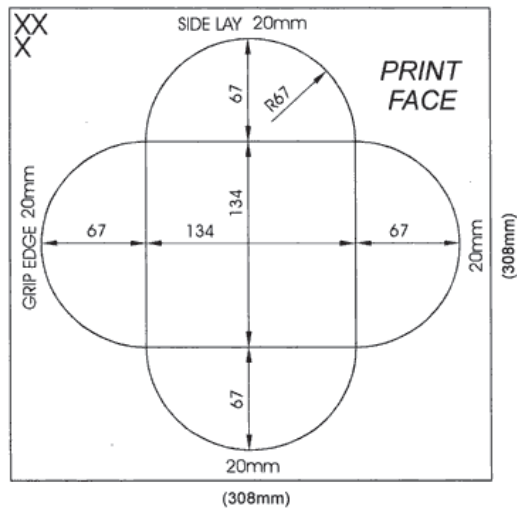
Dimensions: 229 x 324mm

Suits: A4 Unfolded, A3 Folded Once



PETAL ENVELOPE - 134MM

Minimum Sheet Size: 308 x 308mm
Folded Size 134 x 134mm -
Cut to Cut 268x 268mm



PETAL ENVELOPE - 150MM

Minimum Sheet Size: 340 x 340mm
Folded Size 150 x 150mm -
Cut to Cut 300x 300mm

